

# **The Future of Water in New Mexico**

## **Emerging Policy Priorities**

**Melanie A. Stansbury**

**Presentation to the New Mexico Water Dialog**

**January 9, 2019**

**Albuquerque, New Mexico**



# **Biggest Challenges in Water in NM**

- **Aging & outdated systems**
- **System change**
- **Need for whole new approach**



**The system is tipping**

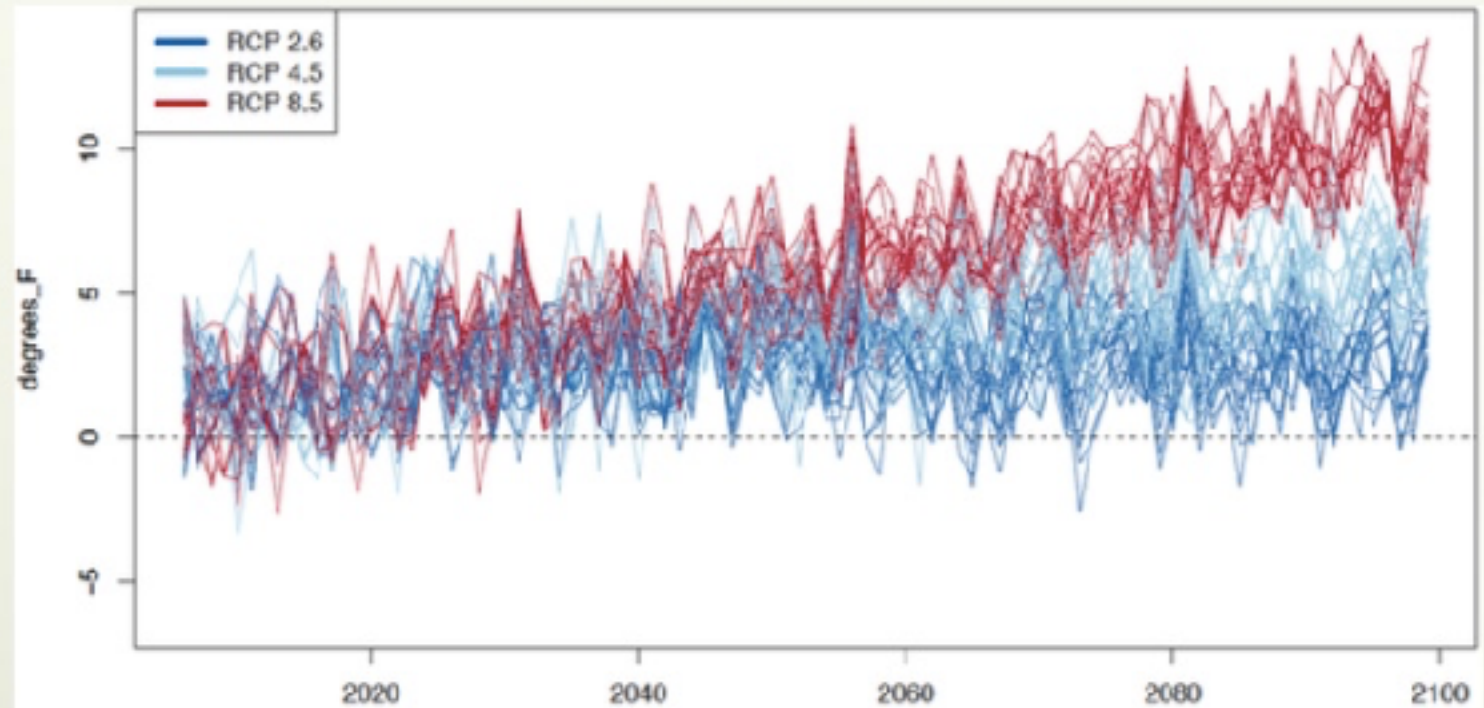
**But we have not tipped in our response...**

**There is a mismatch between  
what we know and what we do**



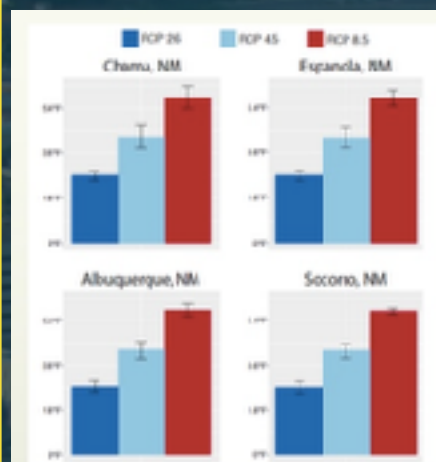
# Old Paradigm Stressors

- System Change

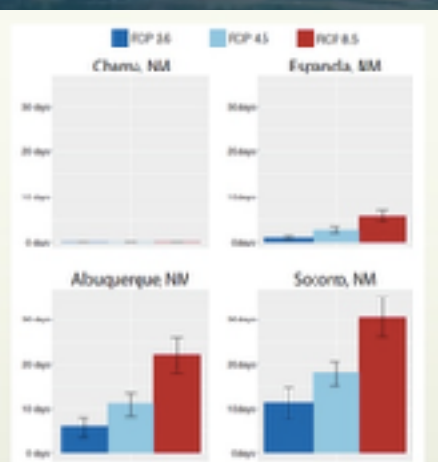


# Old Paradigm Stressors

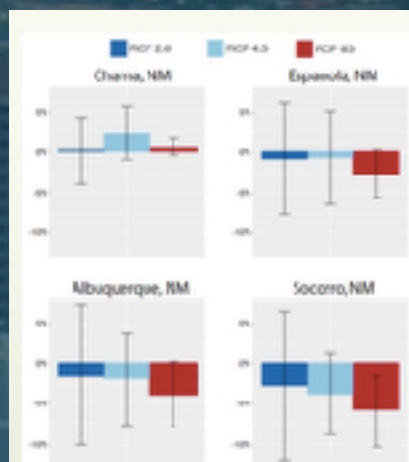
- System Change



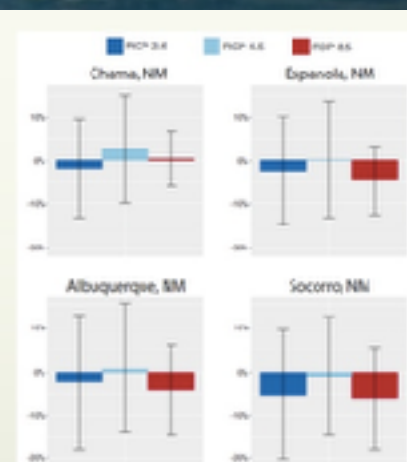
**2041-2070 – Projected Change in Annual Average High Temperature**



**2041-2070 – Projected Change in Annual Average Number of Very Hot Days**



**2041-2070 – Projected Change in Annual Total Precipitation**



**2041-2070 – Projected Change in JJA Total Precipitation**



# **Biggest Challenges in Water in NM**

- **New Ideas**
- **A New Paradigm**
  - Science
  - Management
  - Policy
- **A Roadmap for Getting There**



# Paradigm Shifts & Tipping Points

**Old ways persist until  
a credible alternative is viable.**

**Thomas Kuhn, 1962**

***The Structure of Scientific Revolutions***

# Old Paradigm in Water

Divide, Capture, Move, Use, or Lose it





# **A New Paradigm in Water**

- **Basin & Watershed in Scale**
- **Integrated Across Sectors (IWRM)**
- **Science Based**
- **Restorative (Ecological & Social)**
- **Designed for Resilience**

# **A New Paradigm in Policy**

- **Building on past & existing work**
- **2019 Session**
- **Upcoming 2020 Session**
- **Potential package in 2021**



# Process

- Working with LFC to evaluate programs
- Listening sessions across the state
- Meeting with stakeholders & experts
- Looking at potential models
- Potential package in 2021

A high-angle, slightly blurred photograph of a large group of people, mostly men, seated around a large, dark conference table in a meeting room. The room has white walls with several framed pictures or certificates hanging on them. The lighting is somewhat dim, and the overall tone is professional. The text is overlaid on the center of the image.

# **Our Objective**

**To better understand the challenges communities face in managing water on the ground and to evaluate opportunities to modernize and improve state water policy, management, infrastructure and budgeting to address these needs.**



# Summary of our Findings

- We need to modernize our systems.
- The public wants and supports change.
- Key solutions focus on integration, collaboration, and support.



# Organizational Improvements

- Better integration and communication across OSE, ISC, NMED, EMNRD
- Streamline and improve internal processes
- Potential restructuring and modernization of authorities



# **Integrated Water Resources Management (IWRM) & Planning**

- **Integrated and implementable planning**
- **Systems levels approaches needed**
- **Increasing focus on healthy rivers, streams, lakes and ecosystems**
- **Groundwater management**





# Improving Funding

- **Funding, staffing, and pay for state agencies**
- **Improve and streamline funding and address chokepoints in the process**



# Water Quality

- **Integration with quantity — one water**
- **Drinking & waste water needs**
- **Contamination site clean ups**
- **New water sources**
- **State primacy in water quality**



# Community Engagement

- Government-to-government relationships with Tribes
- Supporting rural communities
- Streamlined technical assistance—understanding, planning, designing, funding and implementation
- Service center concept



# Science & Data

- Plan for addressing key gaps
- Need for systematic statewide monitoring and measurement
- IT and data infrastructure and tool plan



# Infrastructure Plan

- **Community infrastructure needs**
- **Aging infrastructure**
- **Forest management and nature-based infrastructure**
- **Resilient infrastructure**



# **The Opportunity & Imperative**

- **Innovation and translation of data & science**
- **Modernizing our grid**
- **Fostering collaboration**
- **Lifting up & touching down in our communities**
- **Brave policy making**



An aerial photograph of a winding river flowing through a lush, green valley. The river meanders through the landscape, surrounded by dense vegetation and trees. In the background, rugged mountains rise under a sky filled with soft, white clouds. The overall scene is serene and natural.

# How We Get There

# Leadership





**Thank you!**

**Melanie A. Stansbury**

**(505) 750 -7079**

**[melanie.stansbury@nmlegis.gov](mailto:melanie.stansbury@nmlegis.gov)**