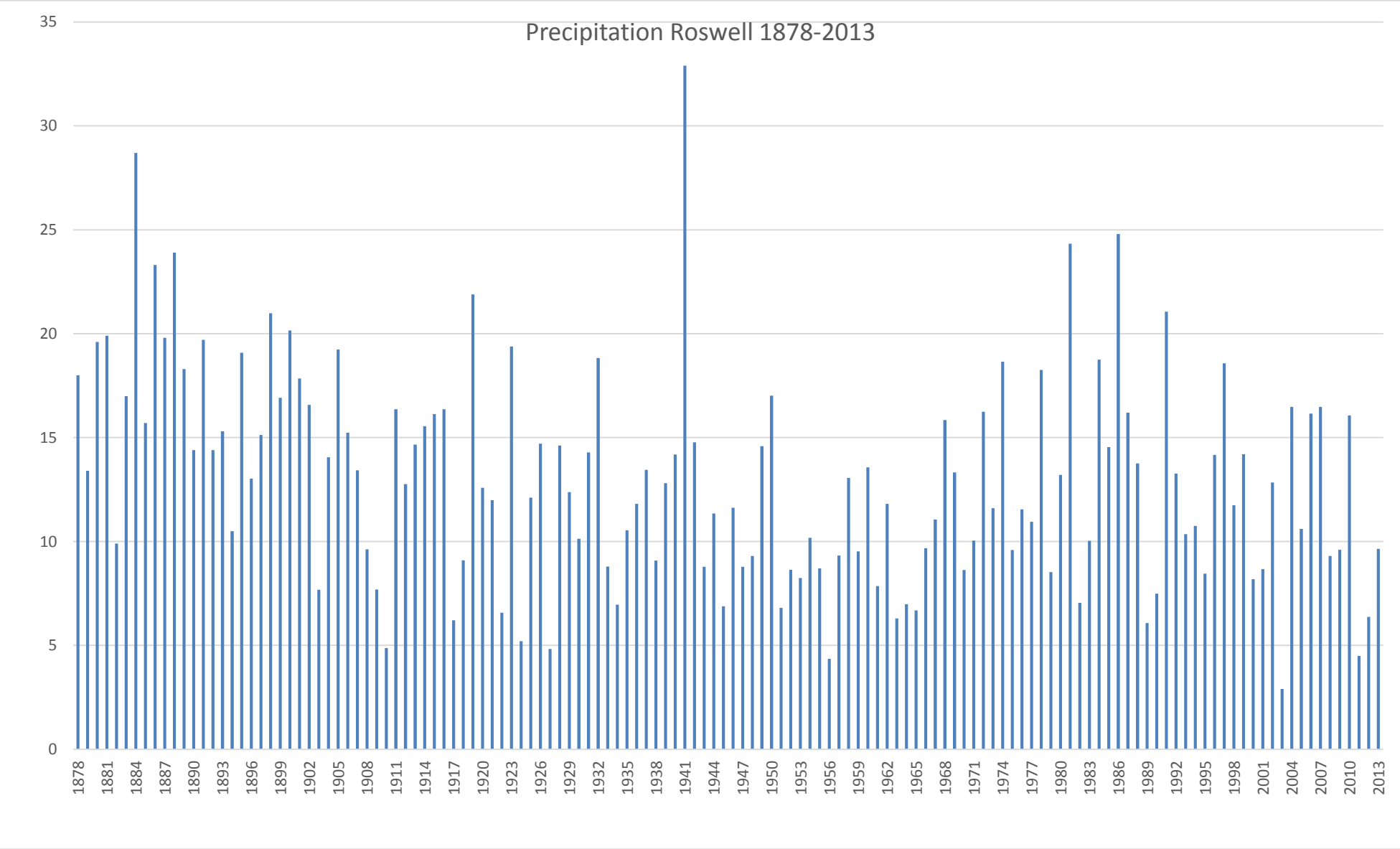


Precipitation Pecos Watershed 2013-2014





Date: 19SEP13 TOT: 1507Z Dir=337 Lat=N32 29.26' Lon=W104 14.75' Alt=4216ft MSL



Date: 19SEP13 TOT: 1510Z Dir=350 Lat=N32 31.64' Lon=W104 22.34' Alt=4409ft MSL

PECOS RIVER COMPACT

The State of New Mexico and the State of Texas, acting through their Commissioners, John H. Bliss for the State of New Mexico and Charles H. Miller for the State of Texas, after negotiations participated in by Berkeley Johnson, appointed by the President as the representative of the United States of America, have agreed respecting the uses, apportionment and deliveries of the water of the Pecos River as follows:

Article I

The major purposes of this Compact are to provide for the equitable division and apportionment of the use of the waters of the Pecos River; to promote interstate comity; to remove causes of present and future controversies; to make secure and protect present development within the states; to facilitate the construction of works for, (a) the salvage of water, (b) the more efficient use of water, and (c) the protection of life and property from floods.

Article II

As used in this Compact:

(a) The term "Pecos River" means the tributary of the Rio Grande which rises in north-central New Mexico and flows in a southerly direction through New Mexico and Texas and joins the Rio Grande near the town of Langtry, Texas, and includes all tributaries of said Pecos River.

(b) The term "Pecos River Basin" means all of the contributing drainage area of the Pecos River and its tributaries above its mouth near Langtry, Texas.

(c) "New Mexico" and "Texas" mean the State of New Mexico and the State of Texas, respectively; "United States" means the United States of America.

(d) The term "Commission" means the agency created by this Compact for the administration thereof.

(e) The term "deplete by man's activities" means to diminish the stream flow of the Pecos River at any given point as the result of beneficial consumptive uses of water within the Pecos River Basin above such point. For the purposes of this Compact it does not include the diminution of such flow by encroachment of salt cedars or other like growth, or by deterioration of the channel of the stream.

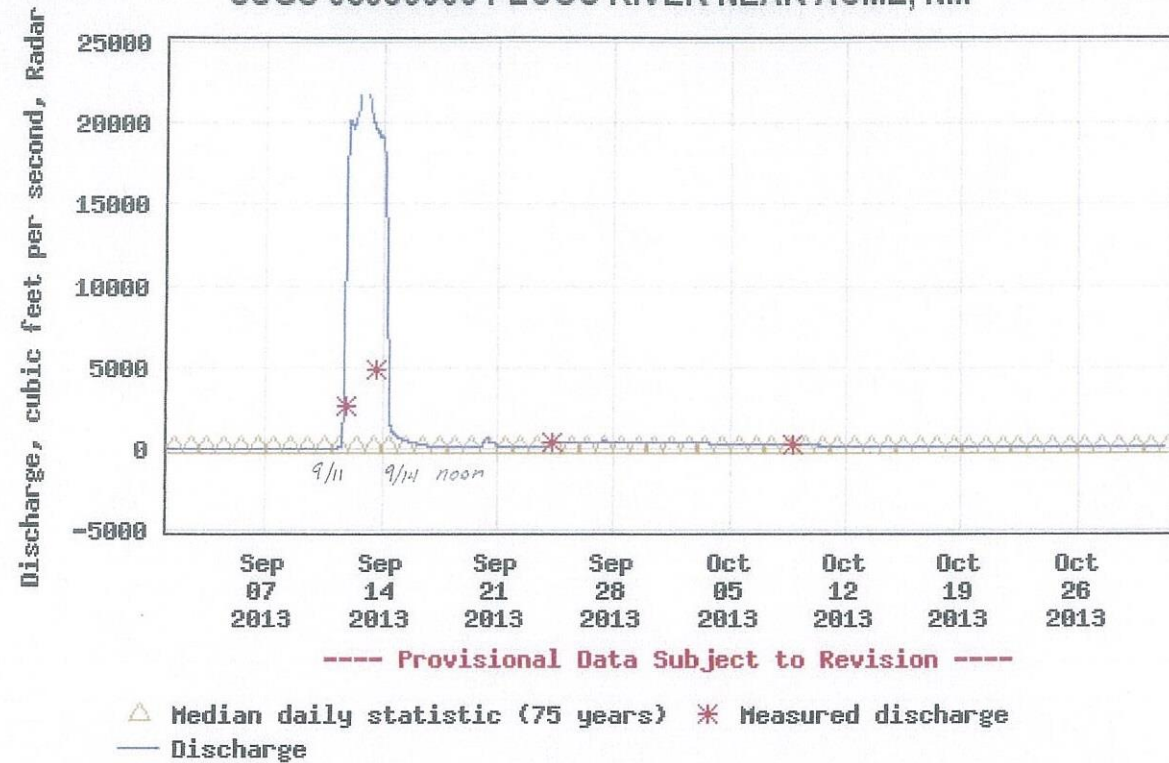
(f) The term "Report of the Engineering Advisory Committee" means that certain report of the Engineering Advisory Committee dated January, 1948, and all appendices thereto; including, basic data, processes, and analyses utilized in preparing that report, all of which were reviewed, approved, and adopted by the Commissioners signing this Compact at a meeting held in Santa Fe, New Mexico, on December 3, 1948, and which are included in the Minutes of that meeting.

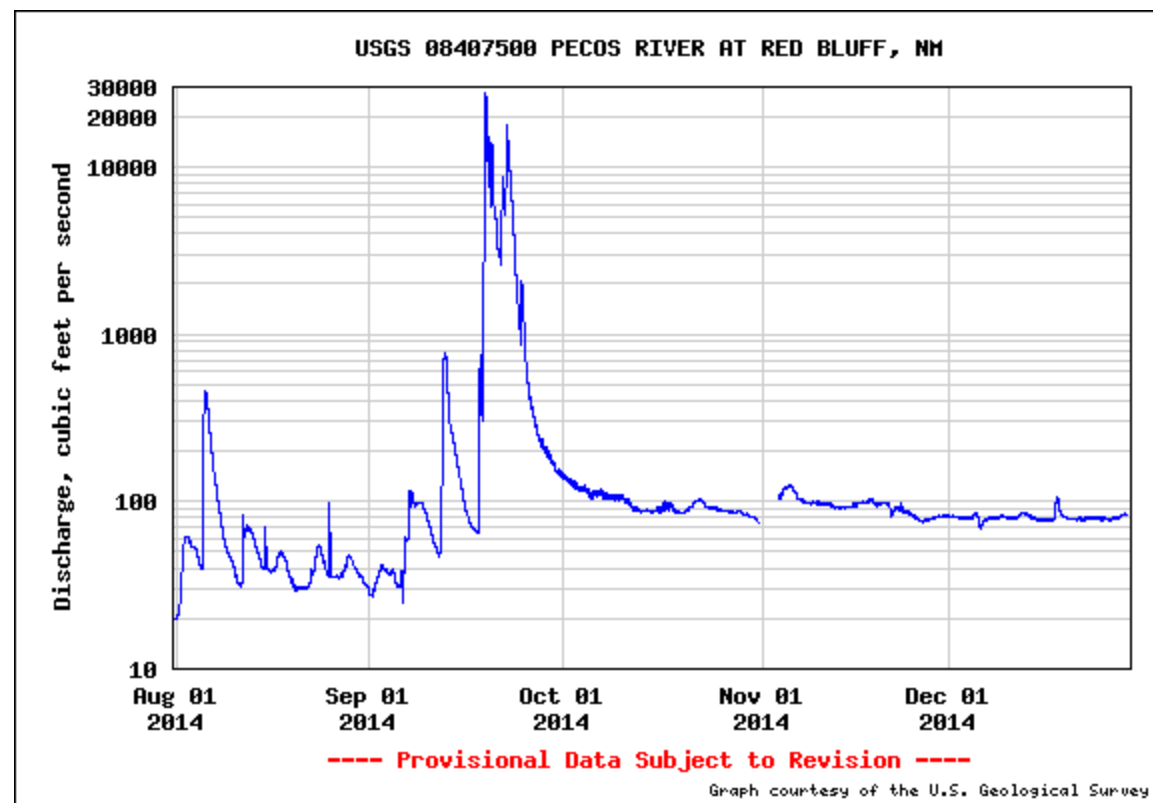
10/31/13

waterdata.usgs.gov/nm/nwis/uw/?dd_cd=04_00060&format=img_default&site_no=08386000&begin_date=20130901&end_date=20131031



USGS 08386000 PECOS RIVER NEAR ACME, NM





9/11/13
Diamond A Ranch - Mossman





9/30/04

